



Ascent® 2011 Upgrade Guide

Ascent 2011 (11.2.6), vbSeries® Firmware (11.2.6) release

Introduction

This document is for software users upgrading from Ascent 2007, 2007+ and 2007+ R2 to Ascent 2011. It is intended to reduce the likelihood of data loss and to detail anticipated results and timeframes of the update process.

NOTE: if you are upgrading from Ascent 2008, 2008 R2, 2009, 2009 R2 or 2010 and you have previously updated your license to the newer 2008 license model, you **DO NOT** need to upgrade your license for Ascent 2011.

Considerations before upgrading:

- Ascent 2011 will NOT function correctly if installed concurrently on the same computer with ANY previous Ascent release. You MUST uninstall Ascent 2010, or any other version of Ascent present, before installing Ascent 2011.
- Ascent 2011 will upgrade your existing database, rendering it incompatible with Ascent 2010 or any earlier release of Ascent.
- Upgrading your vbSeries instrument to the newest firmware version (11.2.6) will prevent the instrument from communicating reliably with any Ascent release prior to 2011.

Before uninstalling 2007, 2007+, 2007+ R2, 2008, 2008 R2, 2009, 2009 R2 or 2010 we strongly recommend generating a backup of your existing database(s):

1. Start Ascent 2007, 2007+, 2007+ R2, 2008, 2008 R2, 2009, 2009 R2 or 2010 and open your current database.
2. Navigate to **File>Database>Backup Options**.
3. Click the **Files** tab then click **Browse**. Navigate to an existing directory or create a new directory in which to store the backup.
4. Click **OK**.
5. Click **Backup Now!**. The backup process may take some time depending on the database size.

Once the backup has completed, repeat the backup process for any other databases required.

Uninstall Ascent 2007, 2007+, 2007+ R2, 2008, 2008 R2, 2009, 2009 R2, 2010:

1. Once all backups have been generated, uninstall your current Ascent instance (**Start>All Programs>Commtest>Ascent>Uninstall Ascent**).

Install Ascent 2011:

1. Download the Ascent 2011 installer to your local computer.
2. Double-click the Ascent installation file and follow the installation instructions.

Software Licensing

NOTE: if you are upgrading from Ascent 2008, 2008 R2, 2009, 2009 R2 or 2010 and you have previously updated your license to the newer 2008 license model, you **DO NOT** need to upgrade your license for Ascent 2011.

If you wish to upgrade from your hardware dongle to the new software license model:

WARNING: IF YOUR DONGLE HAS EXPIRED, CONTACT COMMTEST BEFORE PROCEEDING. YOUR DONGLE MUST BE CURRENT TO UPGRADE.

NOTE: Ensure your computer is connected to the Internet and has an email application (Microsoft Outlook or Mozilla Thunderbird, for example) configured.

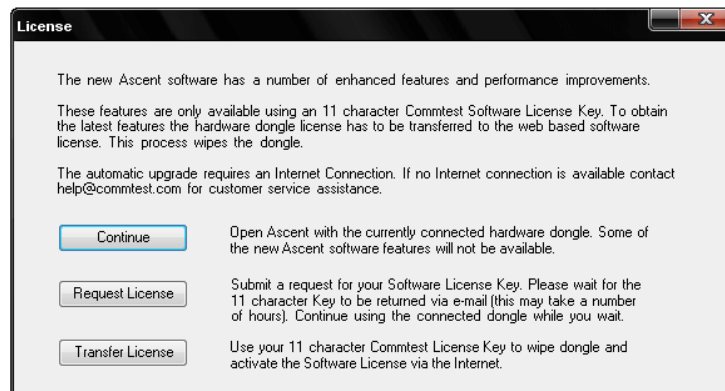
1. Connect your current hardware dongle to the PC and start Ascent 2011. The 'License' window will appear.
2. Click **Request License**. Doing so will generate an automatic email with your dongle details. You may also provide your instrument serial number at this point.
3. Send the email. You will receive a reply from Commtest containing your 11-character Commtest License Key (CLK) within 24 business hours.
4. Re-start Ascent and click **Continue** to run Ascent using your current dongle until your license key arrives.

Once the CLK has been emailed to you:

1. Re-start Ascent with your hardware dongle connected. Click **Transfer License** on the 'License' window when it appears. Follow the onscreen prompts and your software license will be installed.

NOTE: Transferring from a dongle license to a software license will wipe all data from your hardware dongle. You may re-transfer your software license back to the dongle, however, if you so choose.

If you wish to continue using your hardware dongle rather than converting to a software license, simply click **Continue** whenever starting Ascent. Please note, however, that some newer features will only be made available if using the updated licensing method (either software or dongle). If you wish to use the latest features and your hardware dongle, you can transfer your license back to the dongle after performing an initial license upgrade.



During the upgrade process Ascent will upgrade your existing database, which will no longer be compatible with Ascent 2011 or earlier!

NOTE: The upgrade process may take some time (a 2GB database may take up to one hour to complete, for example, depending on the specifications of the host PC).

Updating vbSeries portable instrument firmware:

Updating your instrument firmware will delete the instrument database, together with all existing data, routes and recordings stored on the instrument. Download all instrument data before upgrading the firmware if you wish to retain this information.

NOTE: Upgrading to firmware version 11.2.6 will **not** upgrade your instrument's operating system to version 3.5.6 (3.5.7 for Chinese-language instruments) if the OS was not upgraded previously to version 3.4.28 (when previously upgrading to Ascent 2010, for example).

You must upgrade to firmware 3.4.28 and OS 3.5.6 before upgrading to firmware version 11.2.6. For more information on this upgrade process, please read the [operating system upgrade instructions](#) document on the Commtest Instruments website.

1. Connect the vbX vbSeries instrument to its AC power adapter then to the Ascent host computer via USB or Ethernet cable.
2. Start the vbX instrument and install the USB driver if prompted to do so.
3. Start Ascent 2011.
4. Select **Edit>Manage>vb Instruments..**
5. Click **Add>vbX Portable**. Your instrument should be listed in the right-hand panel. Double-click the instrument to add it to the database. The vbX Properties panel will open.

If the instrument is not displayed, check whether temporarily disabling your firewall allows the software to communicate with the instrument. Alternatively, ensure that the application 'masvb32.exe' (normally located within C:\Program Files\Commtest\Ascent on Windows XP machines) has a firewall exception rule applied to it, or port 13000 has been opened. If you are within a corporate network, you may need to contact your network administrator to modify your group policy.

NOTE: If you wish to receive instrument data, do so at this point. Close the Properties panel and click **Receive**. Select your instrument from the dropdown list and download all required folders. Repeat this procedure from step 3 to Proflash once downloading has been completed.

6. Click **Proflash** and select firmware 11.2.6 (if you are not already using firmware version 3.4.28 you **must** first Proflash using 'vbImage_OS3.5.6_FW3.4.28_PXA270' before upgrading to 11.2.6). Click **Proflash** on the selection window. Confirm that you wish to upgrade the firmware on the instrument. Do NOT interrupt the Proflash process.

NOTE: The instrument firmware will render your vbX vbSeries instrument incapable of communicating with any previous Ascent release. If you choose to revert to a previous Ascent version and reinstate the Ascent database backup, you **MUST** downgrade the instrument's firmware to its previous version before uninstalling Ascent 2011.